

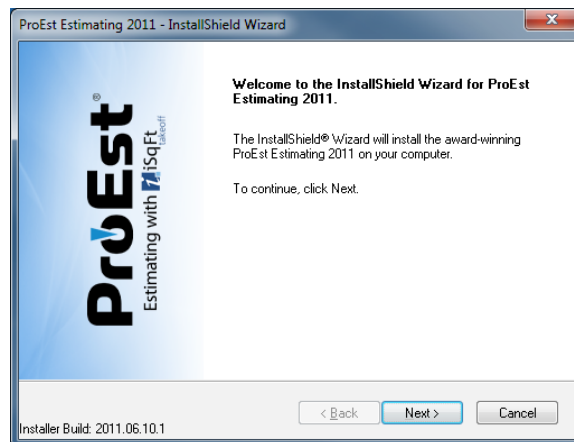
ProEst

Installation Guide

This guide will give you step by step instructions on how to install and configure your ProEst software.

Installing ProEst Estimating 2011

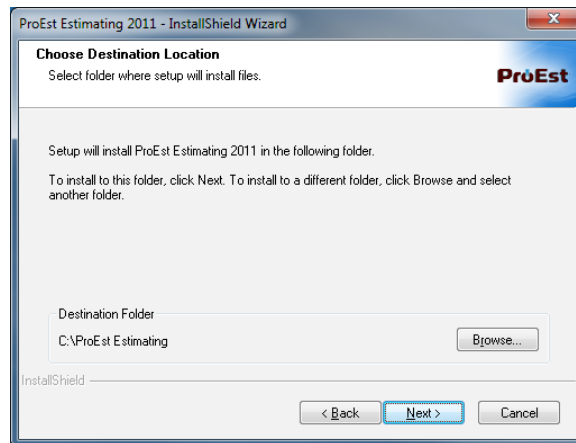
1. Click on this link <http://www.proest.com/software/proest2011.exe> to download the ProEst Estimating 2011 software. Please save the file to any location on your local computer; do not try to run the install from the Internet prompt.
2. After the download is complete, double click on the install exe file to begin installation of the ProEst Estimating 2011 software.
3. Click on Next.



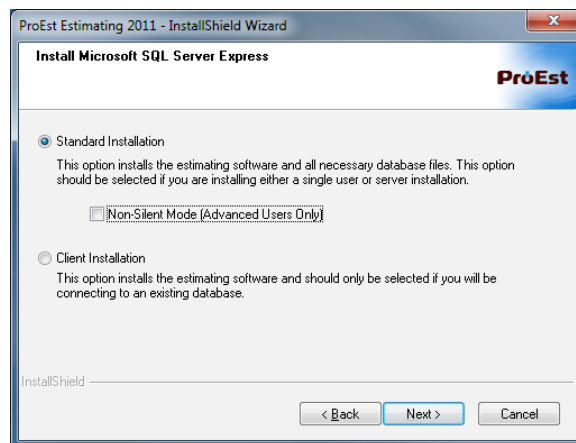
4. Click on "I accept the terms of the license agreement" and then click Next.



5. In this screen you should choose what installation directory for the ProEst Estimating 2011 software. By default, the software will be installed on C:\ (local disk). You cannot install the software to a Network drive (Map Drive). Make sure the folder or drive you choose is accessible, because you will be editing the contents of the folder as you begin to work with the software. This folder will also grow in size as you add your estimating-related information into the software.

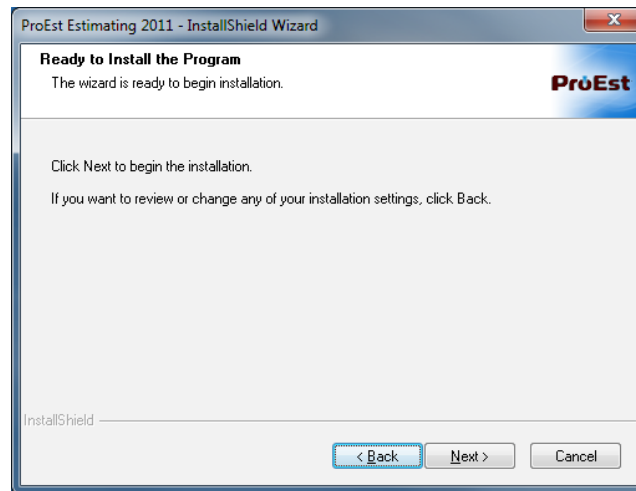


6. In this screen choose your type of installation, either Standard Installation or Client Installation, and click Next.
- Standard Installation will install the ProEst Estimating 2011 software, as well as the database engine, Microsoft SQL server 2005 Express edition. Choose this option if you plan to install the software on a standalone workstation (no network), server, or laptop.
 - Client Installation will install the ProEst Estimating 2011 software with no database. You would then need to connect to SQL server. Choose this option for desktop machines that are going to be connected to a server to access the database.



Non-Silent Mode should only be used for advanced users, and should not be used unless you are having issues installing the Microsoft SQL Server 2005 Express.

7. When you are ready, click Next to begin installation of the ProEst Estimating 2011 software.



8. After installation is complete, click on the Finish button to start the software.



9. When you see the splash screen, click on the Register button to register the software.



10. Complete the Registration Information by entering your company name, the user's e-mail address and the 20-digit serial number assigned to your company. Click on Next.

Register Software

Please Enter Registration Information. [Contact Us](#)

Company

Email Address

Serial Number - - -

Next Cancel

11. When you get the Registration Complete screen, click on Finish.

Register Software

Registration Complete

Thanking you for registering ProEst Estimating 2011.

Please feel free to call or email us with any questions on the operation or use of this software.

<http://www.proest.com>

Finish

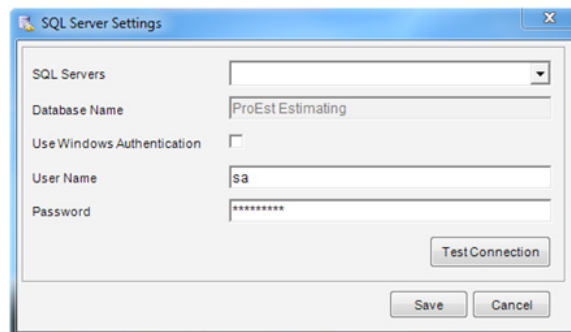
12. After registering the ProEst Estimating 2011 software, you will see one of the two options depending on the installation option you choose (Standard or Client).

NOTE: If Standard Installation was chosen, the ProEst Estimating 2011 software will now create the SQL database. This process could take several minutes before the next screen appears: DO NOT try to launch the ProEst Estimating 2011 software again.

- a. **Standard Installation** will prompt you for a User Name and Password. The defaults for these fields should be User Name: "admin" and Password: "setup". Click on Ok to login.

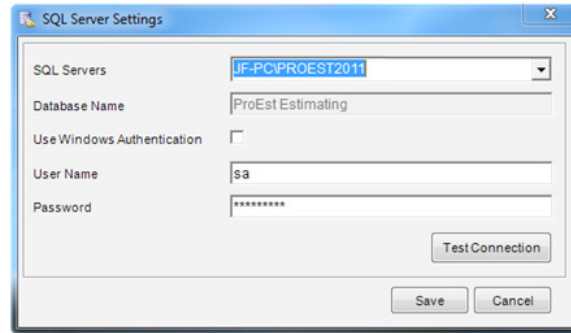


- b. **Client Installation** will prompt you to choose a SQL database.



In the SQL Servers drop down menu, locate the Computer Name/PROEST2011. If you do not see this computer in the list, you need to check if 1) you have installed a Standard Installation on another computer, and 2) whether your Windows Firewall Settings could be blocking the database from being seen. (See Windows Firewall Settings.doc for additional information.)

Leave the default User Name and Password fields. (If these fields are not filled in, enter User Name: sa and Password: ProEst123.) Click on the Test Connection button. You should get the message "Connected to Server Successfully". Click OK, then click Save. If you do not get this message, check the Windows Firewall Settings on both the Client and Server machines.



13. After logging in, the ProEst Estimating 2011 software should automatically launch and be ready to use.